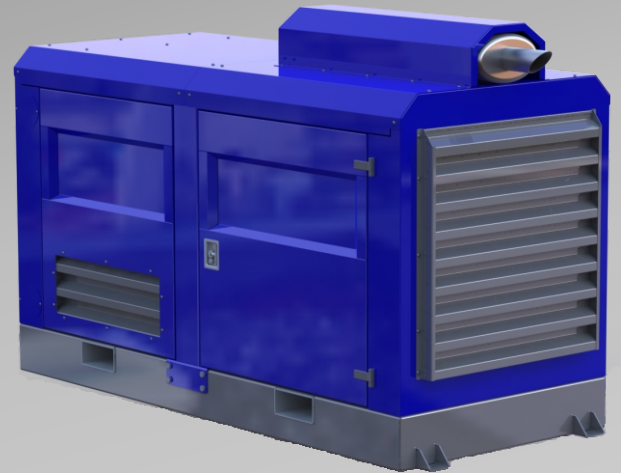


# NEWTONTTECH POWER



## POWER PACK 180



ENGINE	CUMMINS	QSB7-G4
ALTERNATOR	MECCALTE	ECO 38-1SN
ENGINE SPEED	1500	RPM
POWER	3PH 50HZ	180KVA

ENGINE	CUMMINS
FUEL	DIESEL
GOVERNER	ELECTRONIC GOVERNED COMMON RAIL
CYLINDERS	6
ASPIRATION	TURBO CHARGED
DISPLACEMENT	6.69L
COOLING SYSTEM	WATER COOLED
EMISSION	EU STAGE III
ENGINE POWER STANDBY	196 KWM @ 1500RPM
ENGINE POWER PRIME	168 KWM @ 1500 RPM

ALTERNATOR	MECCALTE ECO 38-1SN
BASELOAD POWER	180 KVA; 50HZ; 3PH @ 40°C
CONTINUOUS POWER	180 KVA; 50HZ; 3PH @ 40°C
STAND BY POWER	198 KVA; 50HZ; 3PH @ 40°C
VOLTS	AVR CONTROLLED 380-415V-BROAD VOLTAGE
EXECUTION	BRUSHLESS
OVERLOAD (LONG TERM)	1 HOUR IN A 6 HOUR PERIOD @110% RATED

FUEL CONSUMPTION	
50% OF PRIME POWER	24 L/PH
75% OF PRIME POWER	34 L/PH
PRIME POWER	42 L/PH

[WWW.NEWTONTTECHPOWER.CO.ZA](http://WWW.NEWTONTTECHPOWER.CO.ZA)

602 MOOPLAATS  
PRETORIA

TEL +27 (0) 824432297  
FAX +27 (0) 866111090

[SALES@NEWTONTTECHPOWER.CO.ZA](mailto:SALES@NEWTONTTECHPOWER.CO.ZA)