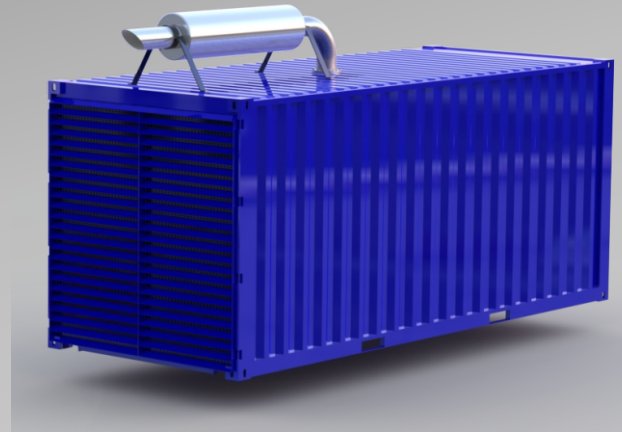


## POWER PACK 750

ENGINE	CUMMINS	QSX23-G2
ALTERNATOR	MECCALTE	ECO 40-VL
ENGINE SPEED	1500	RPM
POWER	3PH 50HZ	720KVA



ENGINE	CUMMINS
FUEL	DIESEL
GOVERNER	ELECTRONIC GOVERNED
CYLINDERS	6
ASPIRATION	TURBO CHARGED INTER COOLED
DISPLACEMENT	23.1 L
COOLING SYSTEM	WATER COOLED
EMISSION	EU STAGE II
ENGINE POWER STANDBY	724 KWM @ 1500 RPM
ENGINE POWER PRIME	656 KWM @ 1500 RPM

ALTERNATOR	MECCALTE ECO 40-VL
BASELOAD POWER	720 KVA; 50HZ; 3PH @ 40°C
CONTINUOUS POWER	720 KVA; 50HZ; 3PH @ 40°C
STAND BY POWER	792 KVA; 50HZ; 3PH @ 40°C
VOLTS	AVR CONTROLLED 380-415V-BROAD VOLTAGE
EXECUTION	BRUSHLESS
OVERLOAD (LONG TERM)	1 HOUR IN A 6 HOUR PERIOD @110% RATED

[WWW.NEWTONTECHPOWER.CO.ZA](http://WWW.NEWTONTECHPOWER.CO.ZA)

602 MOOPLAATS  
PRETORIA

TEL +27 (0) 824432297  
FAX +27 (0) 866111090

[SALES@NEWTONTECHPOWER.CO.ZA](mailto:SALES@NEWTONTECHPOWER.CO.ZA)

FUEL CONSUMPTION	
50% OF PRIME POWER	79 L/PH
75% OF PRIME POWER	117 L/PH
PRIME POWER	151 L/PH