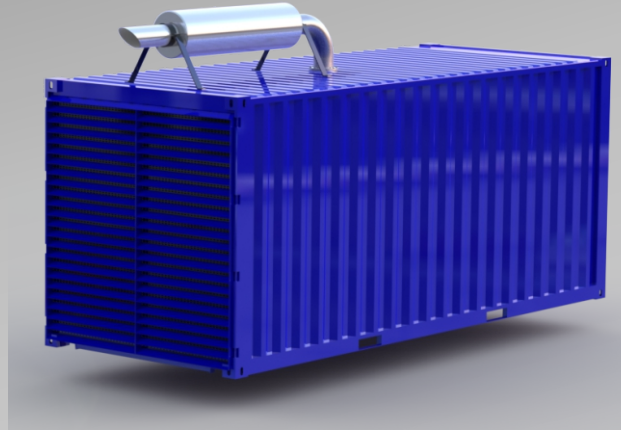


POWER PACK 800

ENGINE	CUMMINS	QSX23-G3
ALTERNATOR	MECCALTE	ECO 43-1SN
ENGINE SPEED	1500	RPM
POWER	3PH 50HZ	800KVA



ENGINE	CUMMINS
FUEL	DIESEL
GOVERNER	ELECTRONIC GOVERNED
CYLINDERS	6
ASPIRATION	TURBO CHARGED INTER COOLED
DISPLACEMENT	23.1 L
COOLING SYSTEM	WATER COOLED
EMISSION	EU STAGE II
ENGINE POWER STANDBY	768 KWM @ 1500 RPM
ENGINE POWER PRIME	701 KWM @ 1500 RPM

ALTERNATOR	MECCALTE ECO 43-1SN
BASELOAD POWER	800 KVA; 50HZ; 3PH @ 40°C
CONTINUOUS POWER	800 KVA; 50HZ; 3PH @ 40°C
STAND BY POWER	880 KVA; 50HZ; 3PH @ 40°C
VOLTS	AVR CONTROLLED 380-415V-BROAD VOLTAGE
EXECUTION	BRUSHLESS
OVERLOAD (LONG TERM)	1 HOUR IN A 6 HOUR PERIOD @110% RATED

FUEL CONSUMPTION	
50% OF PRIME POWER	85 L/PH
75% OF PRIME POWER	121 L/PH
PRIME POWER	161 L/PH

WWW.NEWTONTTECHPOWER.CO.ZA

602 MOOPLAATS
PRETORIA

TEL +27 (0) 824432297
FAX +27 (0) 866111090

SALES@NEWTONTTECHPOWER.CO.ZA