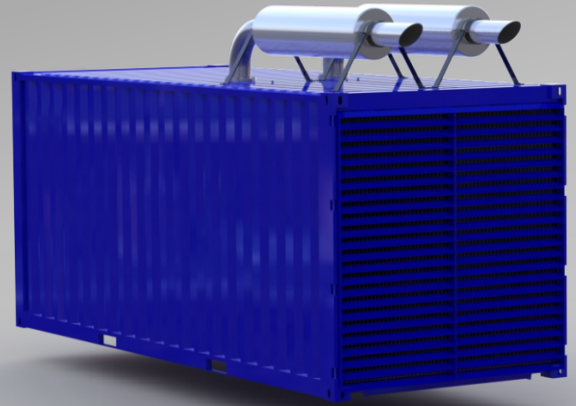


## POWER PACK 900

ENGINE	CUMMINS	QST30-G3
ALTERNATOR	MECCALTE	ECO 43-2SN
ENGINE SPEED	1500	RPM
POWER	3PH 50HZ	910KVA



ENGINE	CUMMINS
FUEL	DIESEL
GOVERNER	ELECTRONIC GOVERNED
CYLINDERS	V12
ASPIRATION	TURBO CHARGED INTER COOLED
DISPLACEMENT	30.51 L
COOLING SYSTEM	WATER COOLED
EMISSION	EU STAGE II
ENGINE POWER STANDBY	895 KWM @ 1500 RPM
ENGINE POWER PRIME	806 KWM @ 1500 RPM

ALTERNATOR	MECCALTE ECO 43-2SN
BASELOAD POWER	930 KVA; 50HZ; 3PH @ 40°C
CONTINUOUS POWER	930 KVA; 50HZ; 3PH @ 40°C
STAND BY POWER	1023 KVA; 50HZ; 3PH @ 40°C
VOLTS	AVR CONTROLLED 380-415V-BROAD VOLTAGE
EXECUTION	BRUSHLESS
OVERLOAD (LONG TERM)	1 HOUR IN A 6 HOUR PERIOD @110% RATED

FUEL CONSUMPTION	
50% OF PRIME POWER	94 L/PH
75% OF PRIME POWER	139 L/PH
PRIME POWER	184 L/PH

[WWW.NEWTONTTECHPOWER.CO.ZA](http://WWW.NEWTONTTECHPOWER.CO.ZA)

602 MOOPLAATS  
PRETORIA

TEL +27 (0) 824432297  
FAX +27 (0) 866111090

[SALES@NEWTONTTECHPOWER.CO.ZA](mailto:SALES@NEWTONTTECHPOWER.CO.ZA)